



MONTHLY MEMBERSHIP PROGRESS REPORT

District 318 A

Results as of: 7/31/2015

GMT: Mahesh Pasqual

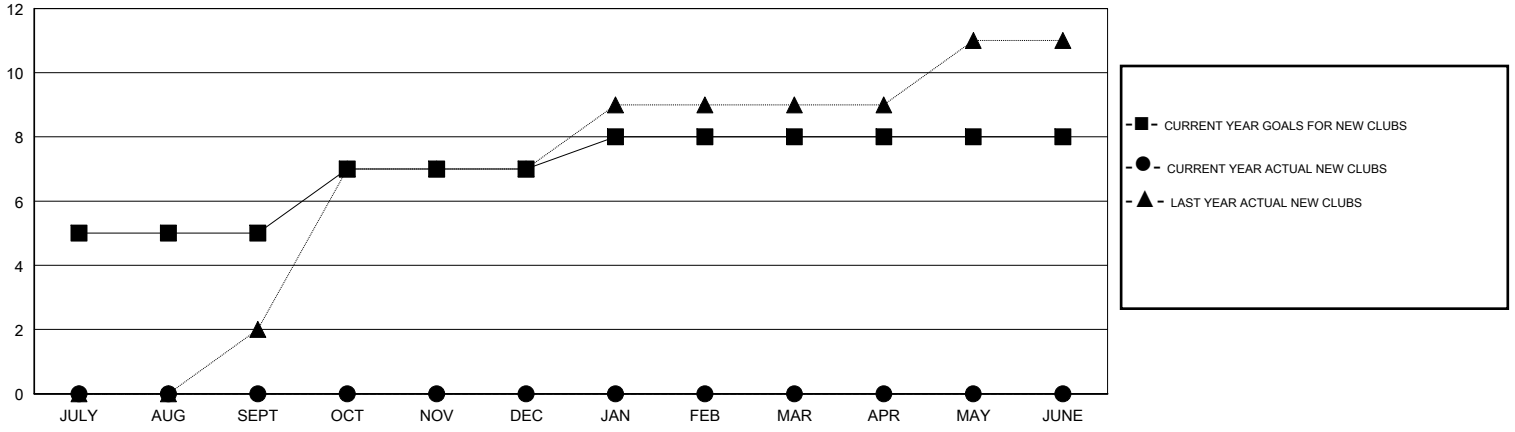
LOCATION INDIA

GMT CA 6

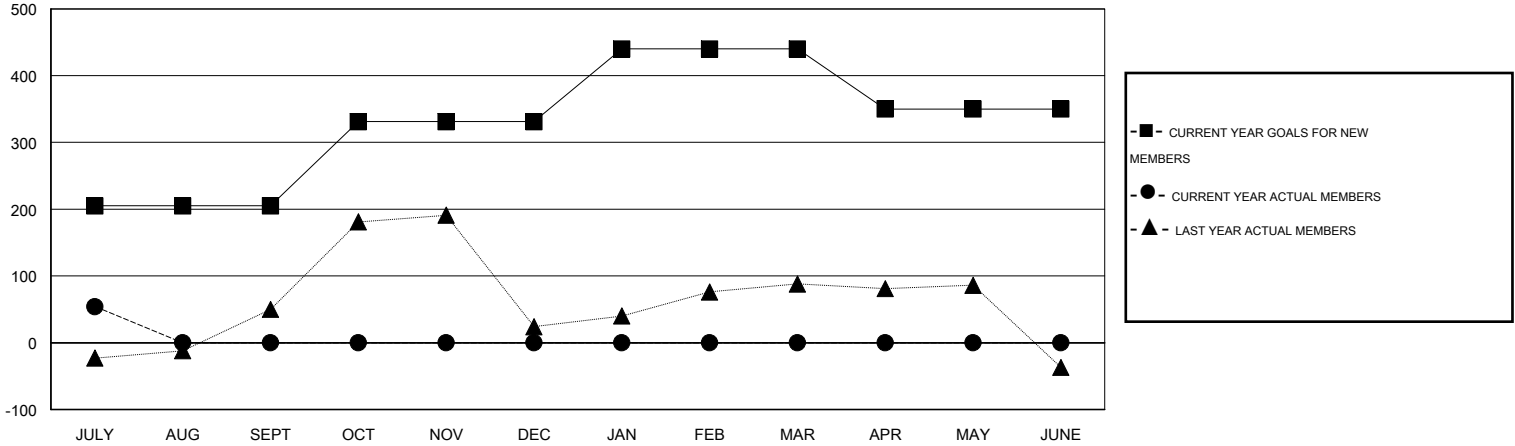
Clubs				
RESULTS FOR 2015-2016				
QUARTER	NEW CLUB GOAL	NEW CLUBS	DROPPED CLUBS	NET GAIN/LOSS
JULY/AUG/SEPT	5	0	0	0
OCT/NOV/DEC	2	0	0	0
JAN/FEB/MAR	1	0	0	0
APR/MAY/JUNE	0	0	0	0

Members				
RESULTS FOR 2015-2016				
QUARTER	NEW MEMBER GOAL	CHARTER AND NEW MEMBERS ADDED	DROPPED MEMBERS	NET GAIN/LOSS
JULY/AUG/SEPT	205	98	44	54
OCT/NOV/DEC	126	0	0	0
JAN/FEB/MAR	109	0	0	0
APR/MAY/JUNE	-90	0	0	0

GOALS AND ACTUAL NEW CLUBS CUMULATIVE



GOALS AND ACTUAL MEMBERS CUMULATIVE



DROPPED CLUBS: 0	33 CLUBS OF 115 ADDED 1 OR MORE NEW MEMBERS	<u>GENDER DISTRIBUTION</u>	
<u>DROPPED MEMBERS</u>		MALE	2,725 (86.73%)
DECEASED	4	FEMALE	417 (13.27%)
CLUB CANCELLED	0	<u>FAMILY UNIT MEMBERS</u> 680	
OTHER	40	<u>HEAD OF HOUSEHOLD</u> 327	
TOTAL	44	<u>NON-HEAD OF HOUSEHOLD</u> 353	

[CLICK HERE FOR HEALTH ASSESSMENT DATA](#)